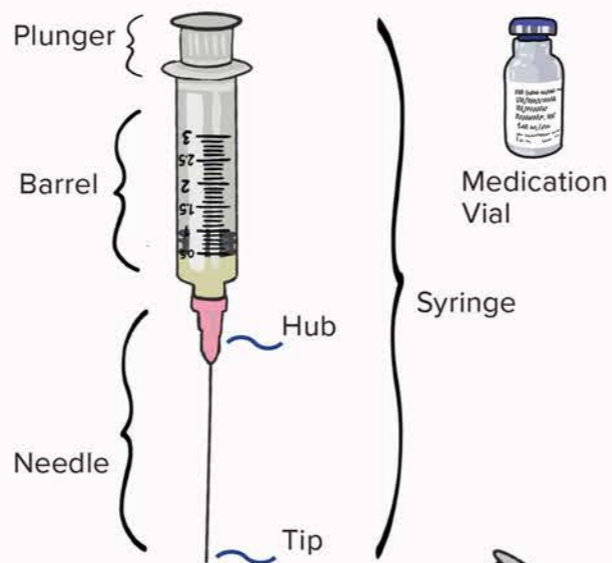


Safer subcutaneous (SC) injections



What is a subcutaneous (SC) injection?

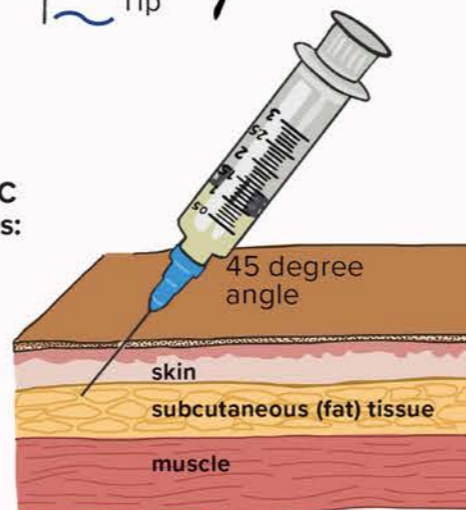
A process that uses a sterile needle to deliver medication into the fat tissue underneath the skin



Common SC needle sizes:



Needle length:
5/8 - 1/2 inch



1 Prevent Infection

Wash your hands: use soap & water, hand sanitizer or alcohol swabs

Use new, sterile equipment each time

Supplies Checklist

- A clean surface
- 18g needle (to draw up the medicine)
- 25, 26 or 27g needle (5/8 or 1/2 inch for self-injection)
- 2 alcohol swabs
- syringe (1-3ml)
- cotton swab or tissue
- bandage
- sharps container
- medication (know your dose)

Talk to your care provider about how to choose the right supplies for you (ex. barrel size, needle gauge & length)

2 Prepare Syringe

Get medicine ready

- Clean top of vial with alcohol swab

Attach needle to barrel

- Open wrappers for 18g needle and barrel
- Use twisting motion to connect needle and barrel
- **Tip:** Prevent the connection points from touching surfaces



Draw air in to syringe

- Pull the plunger back to draw air into the syringe
- Draw up the same amount of air as your dose

Inject air into vial

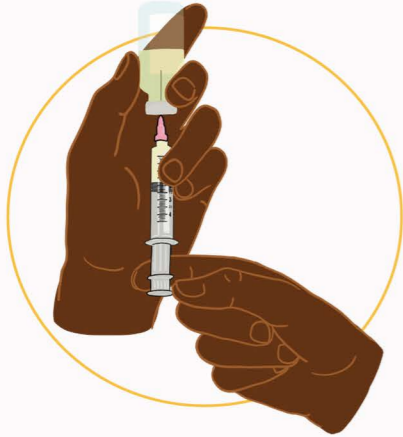
- Remove the needle cap
- Push needle through rubber stopper
- Inject air into vial
- Keep needle inside vial



3 Withdraw Medication

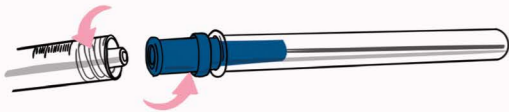
Withdraw medication

- Turn needle and vial upside down
- Keep needle tip in the liquid
- Pull plunger to withdraw medication



Remove air bubbles

- With the needle pointing upwards, flick syringe to push any bubbles to the top
- Gently press the plunger to push bubbles out
- **Make sure** you have the **correct dose**
- Remove needle from vial
- Recap needle
- **Tip:** If small air bubbles remain, they are **not dangerous**



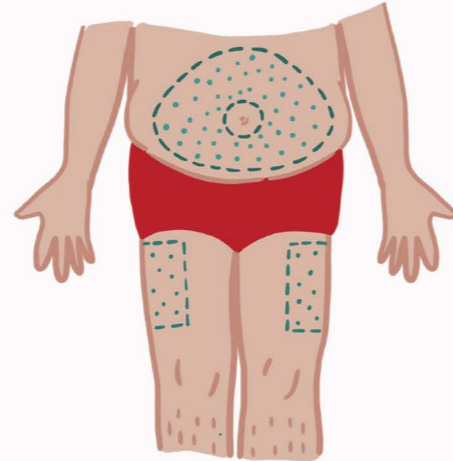
Switch needles

- To prevent wasting medication, pull a big air bubble into syringe
- Twist off 18g needle top and dispose in sharps
- Attach preferred needle (25g 26g, or 27g)
- Push the air bubble out and recheck your dose

4 Find Injection Site

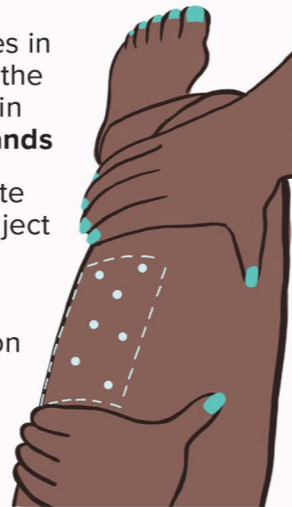
The medicine can be injected in to **fat tissue just below the skin** in two areas:

1. the **abdomen** (except for 1-inch around the bellybutton) and
2. the **upper, outer** area of the **thigh**



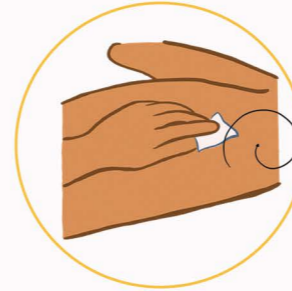
To find the area **on the thigh**:

- Place one hand above the knee
- Place another hand below the groin
- The injection goes in the **outer** part of the **thigh**, anywhere in **between the hands**
- Use a different site every time you inject
- Choose a site with no swelling, hardness, irritation or bruising
- Avoid injecting into scar tissue if possible



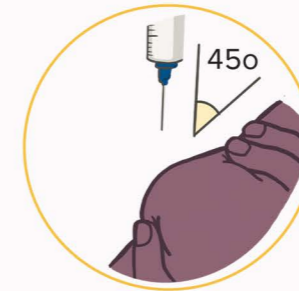
5 Give Injection

With clean hands, use alcohol swab on injection site



Wipe from the centre and spiral outwards

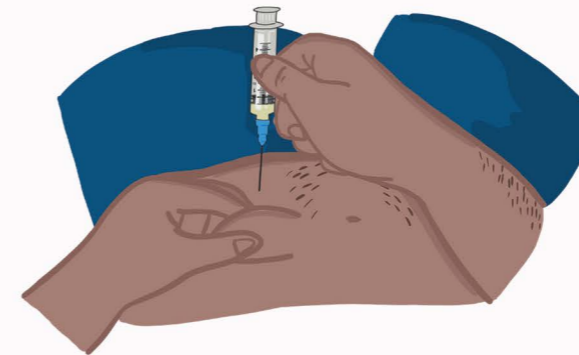
Dry for 30-60 seconds



Gently pinch up skin around the site

Hold needle at 45 degrees

Take a deep breath and try to relax

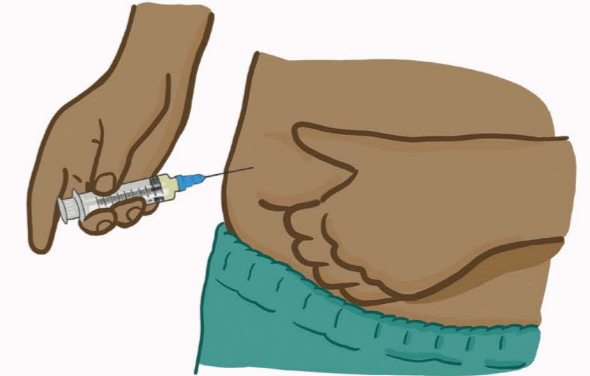


Insert the needle quickly, with a smooth motion

6 Finish Injection

Release skin

Slowly push plunger to inject medicine - you may feel a bit of stinging or pressure, that is ok



Hold needle in place for 10 seconds

Pull needle out in one smooth motion

Dispose needle in sharps container



Use a cotton swab to apply gentle pressure until bleeding stops

Apply bandage

Find and return injection supplies in BC:
towardtheheart.com/site-finder